

## HOW TO GET TO US

(page 1 of 2)

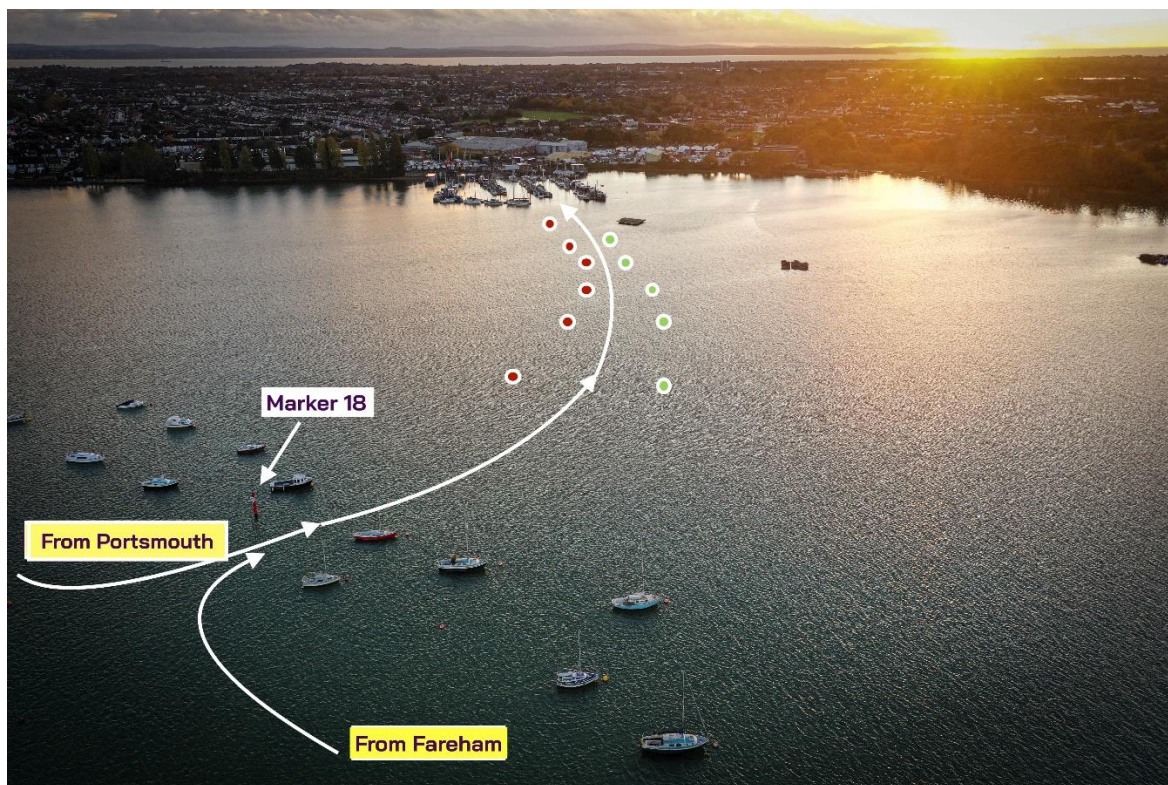
*These instructions are for guidance only. You must refer to your own navigation charts.*

The entrance to Quay Lane Boatyard is at **red channel marker 18**.

Whether you're coming from Portsmouth or Fareham, you must stay in the main harbour channel until marker 18. Go around the northern side of the marker, per the picture.

Once you've turned, look out for the green and red traffic cones that mark our channel. As you enter our harbour, you'll see the entrance to the slipway ahead.

If you're berthing on the outside of a pontoon, remain in our channel until you've passed the final cones before heading for the berth.



### *If you're coming ashore*

James, our Yard Manager, asks that you arrive about 30 minutes before high water. The team will be looking out for you, and will give you guidance on the day.

**Holding berth**  
**(page 2 of 2)**

Depending on the day's operations, we may need to put you on a temporary berth for a while. Please have mooring lines ready, just in case.

Our usual holding berth is per the picture.

